

## Aspiration for Sustainability

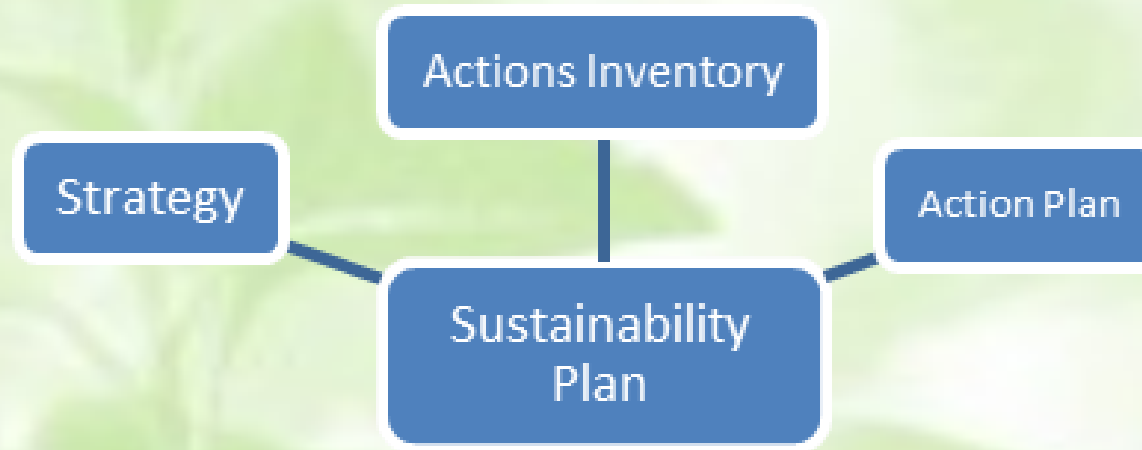
*Fleming College's programs and practices demonstrate its commitment to building a sustainable future socially, economically, and environmentally for staff, students and the wider community.*

### The Actions Inventory

The second component is the *Actions Inventory*. This component contains a listing of potential action items, associated with each of the *Strategies* that could be taken to achieve the Plan's *Goals*.

### The Strategy

The first component is the Strategy. This component represents the broader and longer term aspects of the Plan including the *Aspiration for Sustainability, Principles, Goals and Strategies*.



### The Action Plan

The third component is the *Action Plan*. Each year a number of actions to pursue will be chosen from the *Actions Inventory*.

## Goals

The *Goals* for our 2013-2018 Sustainability Plan are as follows:

- \* Increase awareness and understanding of sustainability.
- \* Incorporate sustainability into the student experience.
- \* Reduce negative environmental impact of Fleming operations.
- \* Improve the well-being of Fleming staff, students and the communities they serve.
- \* Collaborate on sustainability initiatives.
- \* Utilize sound business analysis for sustainability initiatives.

## Principles

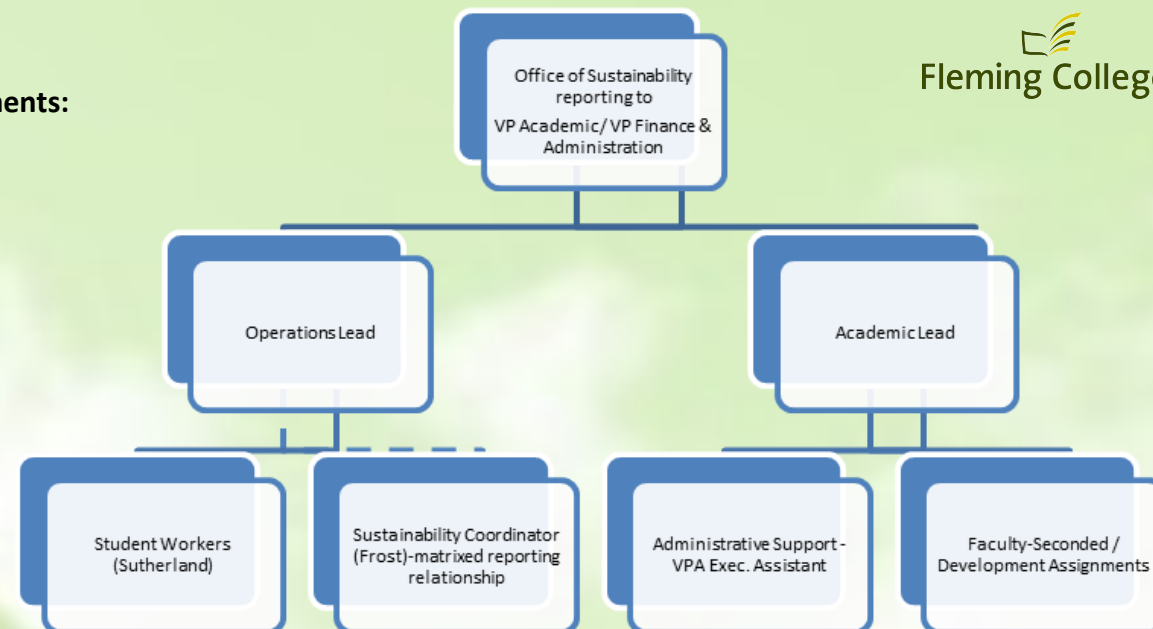
The *Principles* which reflect our culture and guide our plan are as follows:

- \* Communication & Collaboration
- \* Engagement & Integration
- \* Quality
- \* Stewardship & Accountability

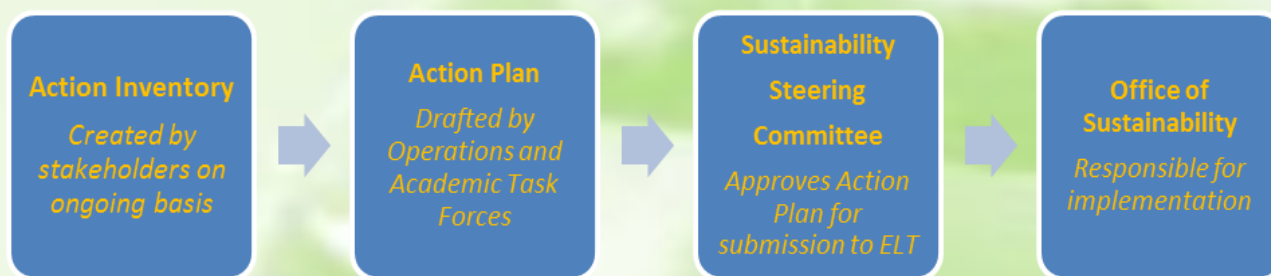
## Implementation

Successful implementation of our Fleming Sustainability Plan involves the following key components:

- \* Commitment of Senior Leadership
- \* Office of Sustainability
- \* Effective Plan Structure
- \* Engaging Staff & Faculty
- \* Continual Cycle - Progress & Reporting
- \* Resource Allocation



## Action Plan Development Process



## Office of Sustainability Responsibilities

- \* Implementation of sustainability plan
- \* Communication on sustainability initiatives and results
- \* Knowledge transfer among internal stakeholders and with external stakeholders
- \* Pathway to sustainability resources – both human and financial
- \* Link to stakeholder groups – internal and external