

WELCOME TO THE HALIBURTON SCHOOL OF ART + DESIGN

We're looking forward to having you with us in the inspirational Haliburton Highlands. The following details will assist you with your preparations.

Locations:

All courses will be located at Fleming's Haliburton Campus except for Blacksmithing, Iron Sculpture and Bladesmithing, which are held at Fleming's Peel Building, located a short drive from campus. Please consult the map included here. There will be an administrative office at the Fleming Campus only. Specific room locations for all courses will be emailed to you prior to course start, as well as posted at the main entrance of the campus. Staff will be available to assist each Monday morning. Movement on campus is limited, prescribed and indicated by signage and floor markings.

To accommodate shifting registration levels, last minute changes, and specific needs, room locations are determined the Thursday afternoon prior to the start of the course and are subject to change.

Hours:

Your classes will run from 9:00am to 4:00pm, Monday to Friday, with a 30-minute midday break. Some courses are 6 days - please carefully check your course information. With COVID safety protocols, your entrance time will be designated and included in the email sent the week prior to your course.

Food and Beverages:

Please be aware that there is no food service this summer. There are vending machines with drinks and snacks located on campus. With only a 30-minute midday break, you may want to consider bringing lunch and snacks with you, in a small cooler if necessary. Eating is only permitted in designated areas.

COVID 19 – Fleming Safe

We are committed to providing a safe and healthy environment on campus. The college is closed to the general public. Only students registered in classes will be permitted on campus and successful COVID screening is mandatory to enter the building. Staggered entrance times, face coverings worn at all times, social distancing, pre-entry training, and additional protocols will be key to keeping everyone safe.

All occupants are required to follow all COVID safety protocols, regardless of vaccination status.

Additional safety-related communications, instructions, and mandatory tasks will follow by email. It's critical that you monitor your email and fully read Haliburton School of Art + Design messages prior to your arrival.

Accommodation:

There are many and varied accommodation options in and around the village of Haliburton. The college maintains a list that includes both commercial and private options. This information is available to view at www.hsad.ca or can be mailed to you upon request.

Alternatively, The Haliburton Highlands Tourism Department can assist and can be reached at 1-800-461-7677 or www.myhaliburtonhighlands.com. We recommend that you inquire about cancellation policies. In our experience, the hosts are very co-operative but it's best to clarify to avoid a situation where you lose your accommodation fees if we or you need to cancel your course.

Please ensure you confirm COVID safety protocols when investigating accommodation options.

.../2

Materials you need to bring:

Where applicable, a list of materials necessary for your course(s) is included in this package. *Please feel free to check the status of your course if you are concerned about investing in materials.* There will be some art supplies available for purchase on campus Mondays and Wednesdays from June 28 to August 11.

Course Cancellations:

All courses are subject to cancellation in the event of insufficient registration or public health directives. Should your course be cancelled due to insufficient registration, you will be notified 2 weeks in advance of course start. Ensure that we have an alternate means of reaching you if you will not be at home. Assume that your course is running as scheduled unless you hear otherwise. You are eligible for a full refund of fees or the option of transferring to another course within the current HSAD schedule (pending space availability) if the college cancels a course.

A Friendly Reminder Regarding Our Refund Policy:

Courses are non-transferable.

If You Cancel: All notifications of cancellation must be received in writing. If you cancel any time up to 14 days prior to course start, you will receive a full refund, less a \$25 administrative fee. If you cancel later than 14 days prior to course start, there is no refund of fees. This policy applies in all circumstances due to our commitment to students and instructors two weeks prior to course start. Should you be able to attend a different course within the current schedule we would be happy to attempt to accommodate you, pending space availability. Our fax number is (705) 457-2255 and is available 24 hours/day 7 days/week. Notification is also welcomed electronically at askus@hsad.ca

Smoking:

There is a clearly marked outdoor smoking area at the Fleming campus.

Please don't hesitate to contact us if you have any questions or concerns. I'm confident your time with us will be inspiring, challenging, and rewarding.

Regards,

Gail Woodard

Gail Woodard
Haliburton School of Art + Design
839 - 297 College Dr.
Haliburton, ON K0M 1S0
Ph. 705-457-1680 TF 1-866-353-6464 F 705-457-2255
www.hsad.ca



www.facebook.com/flemingHSAD



www.instagram.com/flemingHSAD

(Please proceed to next page.)

MATERIAL LIST

ACRYLIC, MIXED MEDIA & COLLAGE

ARTS2393

INSTRUCTOR: Melanie Matthews

COVID-19 Safety protocols – Reference the attached
Mandatory Studio Safety Practices apply – Reference the attached
FACE COVERINGS WORN AT ALL TIMES,
NO OPEN TOE OR HEEL SHOES IN CLASSROOM/STUDIOS

Please check the status of your course before purchasing materials!

There will be a material fee of \$30 payable on the first day of class. This fee will cover all grounds, paints, mediums, gels, pastes, finishes and varnishes.

Students please bring:

- Substrates and ephemera.
- 2-3 braced wood panels approx. size 18"X 24" or 24"X 24" for final project
- 6 canvas boards or thick acid free cardboard or plywood veneer panels 10"X12" for exercises.

Please Note: Food service is unavailable

This course will be held at the Haliburton Campus, Fleming College

**AN ART SUPPLIER WILL BE ON CAMPUS
MONDAYS AND WEDNESDAYS.
FROM JUNE 28 to AUGUST 11 ONLY**

Please ensure that you are aware of our refund policy as outlined in our brochure.

COVID-19 Safety Protocols

We are committed to providing a safe and healthy environment on campus.

Fleming Safe, the college's extensive safety guideline, consists of multiple layers of safety protocols including:

- Facilities accessible only to approved occupants
- Daily COVID screening upon entry
- Face coverings worn at all times
- Reduced maximum capacities in learning spaces
- Physical barriers where necessary, physical distancing floor markings
- Cleaning of high-touch areas, products adhering to Health Canada guidelines
- Availability of sanitizing wipes and hand sanitizer
- Required personal protective equipment is included on material lists

Visit flemingcollege.ca/covid19 for details about campus safety protocols or contact us at askus@HSAD.ca



Mandatory Studio Safety Practices

Your health and safety is our priority. Our studio environments can have a number of objects, tools and chemicals that require personal protective equipment (PPE) or other consideration for your wellbeing. All persons (including faculty, staff and students) are asked to observe the following while in the shops and studios:

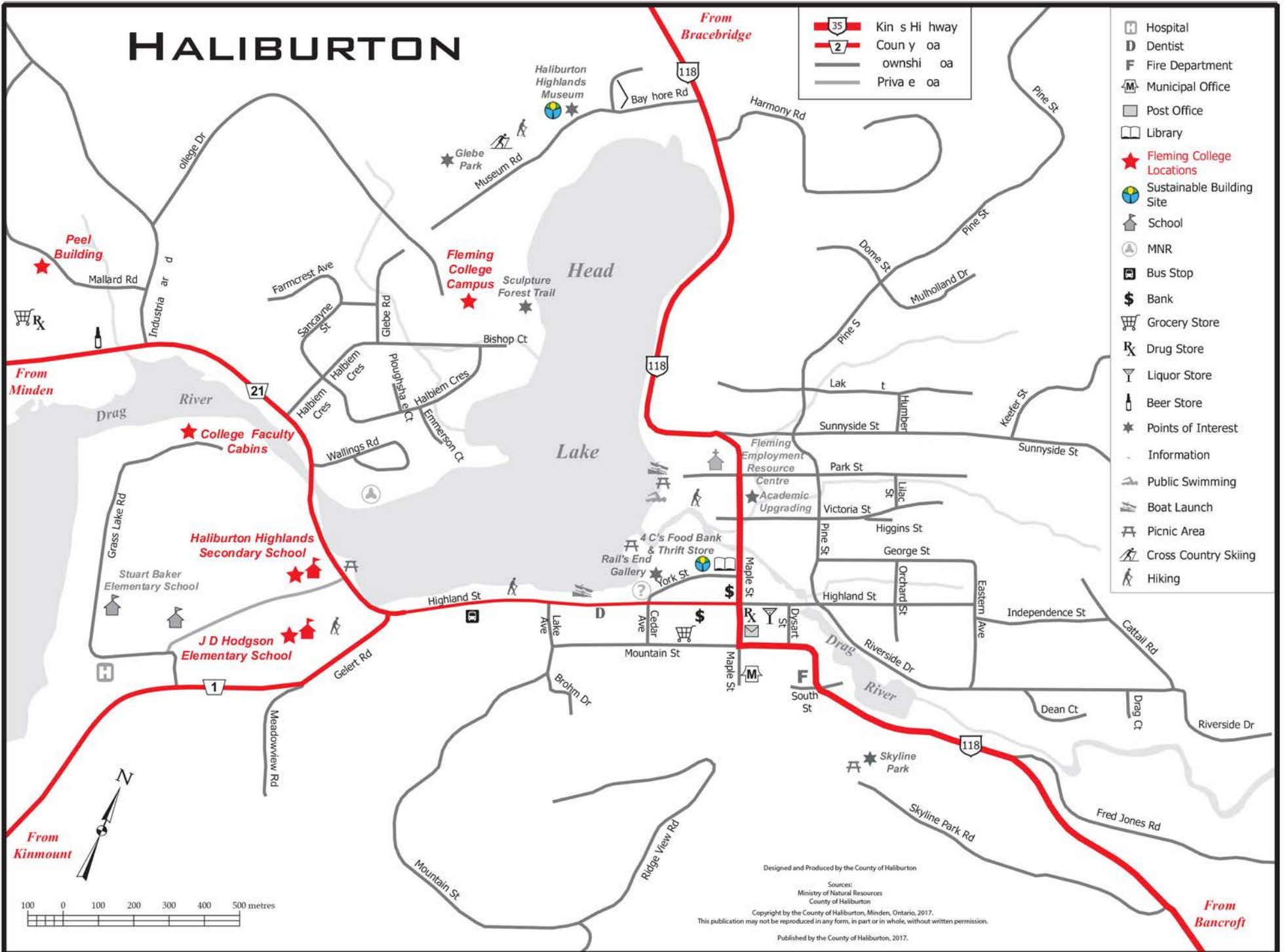
- ✓ **Wear sturdy and appropriate shoes such as sneakers, closed leather shoes or work boots – *open-toed shoes, flip-flops or high heels are not allowed***
- ✓ **No long, dangling clothing or accessories** (scarves, flowing sleeves, chains, long necklaces, etc.)
- ✓ **Long hair must be tied back**
- ✓ **No bare skin if exposure to chemical or tools/machinery is likely**
- ✓ **Appropriate PPE is mandatory when operating tools and equipment within the studios.** Please consult with the faculty or studio technician to determine the appropriate PPE required for specific machines and studio processes.

As these are mandatory safety practices, we will follow up directly with students who may have overlooked the above. Individuals may be asked to address any concerns before continuing to work in the studio.

Be sure to buy appropriate, good quality safety articles and equipment i.e. safety boots, protective eyewear, hearing protection, work gloves, x-acto knives, etc. – ask your supplier for advice.

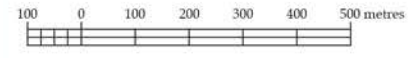
Your cooperation is appreciated.

HALIBURTON



Kin s Hi hwy
 Coun y oa
 ownshi oa
 Priva e oa

- Hospital
- Dentist
- Fire Department
- Municipal Office
- Post Office
- Library
- Fleming College Locations
- Sustainable Building Site
- School
- MNR
- Bus Stop
- Bank
- Grocery Store
- Drug Store
- Liquor Store
- Beer Store
- Points of Interest
- Information
- Public Swimming
- Boat Launch
- Picnic Area
- Cross Country Skiing
- Hiking



Designed and Produced by the County of Haliburton
 Sources:
 Ministry of Natural Resources
 County of Haliburton
 Copyright by the County of Haliburton, Minden, Ontario, 2017.
 This publication may not be reproduced in any form, in part or in whole, without written permission.
 Published by the County of Haliburton, 2017.

From Bancroft

From East Toronto

Travel North on the Don Valley Parkway/Hwy 404 to Davis Drive.
Take Davis Drive to Hwy 48. Follow Hwy 48/County Road 48 to Hwy 35.
In Minden, turn right onto County Road 21 and follow to Haliburton.

From West Toronto

From Hwy 401 take Hwy 400/Hwy 11 North to Hwy 118.
Take Hwy 118 East to Haliburton.

From North Bay

Take Hwy 11 South to Huntsville.
Take Hwy 60 to Dwight, and then Hwy 35 South to Carnarvon.
Take Hwy 118 East to Haliburton.

From Ottawa

Take Hwy 417/Hwy 17 toward Pembroke.
Take Hwy 132 to Renfrew and stay on Hwy 32 until
it ends at Hwy 41. Turn South on Hwy 41 to Denbigh.
At Denbigh, take Hwy 28 through Bancroft to Hwy 118.
Follow Hwy 118 to Haliburton.

Locations of Summer Programs:

- Haliburton Campus (297 College Drive)
- Peel Building (149 Mallard Road)

*If you have any trouble locating us,
do not hesitate to call:
1-866-353-6464 (press option 4) or
705-457-1680*

